



VULCAN
AGRI

AGRICULTURAL RUBBER TRACKS

FOR TRACTORS AND HARVESTERS

Trusted Parts Dealer Since 1873



ABOUT US

At Vulcan Agri, we specialize in manufacturing high quality agricultural rubber tracks and undercarriage components for tractors, combines and harvesters of all brands:

John Deere - Case IH - New Holland - Fendt - AGCO Challenger - CAT Challenger - Claas - Dewulf - Ploeger - Grecav - Tidue - Poluzzi, etc.

Vulcan Agri tracks are a reliable and cost-effective alternative to original equipment tracks. You can rely on their performance and durability to optimise your farming operations.

- Agricultural tracks offer significant advantages, including exceptional flotation and optimum traction, enabling you to work efficiently whatever the weather conditions.
- They also have other advantages, such as increased load capacity, improved stability and low soil compaction.
- Tracks are a versatile tool that allow you to optimise your work in all kinds of difficult conditions.

✓ Fast delivery within 24 hours

Delivery by tracked priority courier throughout Europe or by charter for export outside the EU.

✓ Complete range of agricultural tracks

A range of tracks from 18" to 36" wide for all makes of tracked agricultural machinery.

✓ Adaptability of parts and guaranteed assembly

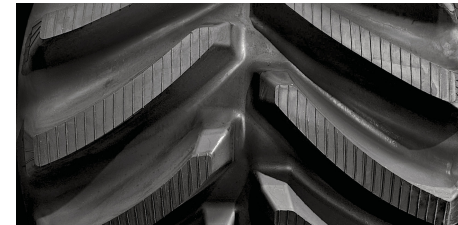
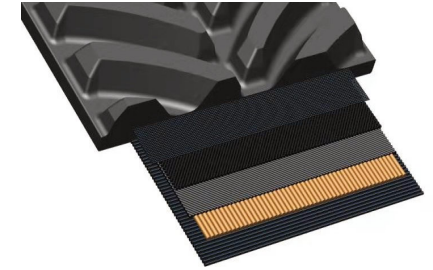
Our experts will determine the best dimensions for your machine and guarantee that the parts will fit.

✓ Spare parts for undercarriage

A guaranteed, cost-effective range of rollers and wheels for all major makes of tractors and harvesters.

Strong Cables

The track tensile strength is ensured by a full layer of 5.4mm, seamless tension cables. In addition, the track's core is reinforced with as much as four steel cable layers placed at special angles to maximise the core stiffness, making our tracks the best choice for durability and flexibility.



One Step Vulcan

Vulcanisation in one step of track core, guide lugs and tread patterns reinforce solidity and prevent tread pull off. All track parts are strongly vulcanised and bonded together. Low wearability rubber compound offers extended lifetime.

Engineered Quality

New self-cleaning tread bars improve traction whilst offering no vibrations. The tracks are designed to last and come with up to 2 years warranty on Friction and Positive Drive Machines.



Trusted Dealer

Leach Lewis supply the industry only with high quality products at extremely competitive prices. We have a long tradition of servicing and maintaining high levels of customer satisfaction.

Range of tracks from 18" to 36" wide



OUR REFERENCES

CHALLENGER - AGCO

TRACK SIZE	MODEL	WIDTH
25"x6"x53	Challenger Rowcrop 35/45/55	25" - 635mm
30"x6"x53	Challenger Rowcrop 35/45/55	30" - 762mm
25"x6"x56	Challenger Tillage 65/75/85/95	25" - 635mm
30"x6"x56	Challenger Tillage 65/75/85/95	30" - 762mm
25"x6"x58	Challenger MT 735/745/755/765/775	25" - 635mm
30"x6"x59	Challenger MT 735/745/755/765/775	30" - 762mm
36"x6"x59	Challenger MT 735/745/755/765/775	36" - 914mm
30"x6"x66	Challenger MT 835/845/855/865/875	30" - 762mm
36"x6"x66	Challenger MT 835/845/855/865/875	36" - 914mm

CASE - NEW HOLLAND

TRACK SIZE	MODEL	WIDTH
30"x6"x39	CNH 9300/9330/9350/9380	30" - 762mm
36"x6"x39	CNH 9300/9330/9350/9380 - Dewulf RCA3060	36" - 914mm
25"x6"x42	CNH STX Quad 420/470/500/580/620 Axial Flow 7250/8250/9250	25" - 635mm
30"x6"x42	CNH STX Quad 420/470/500/580/620 Axial Flow 7250/8250/9250	30" - 762mm
36"x6"x42	CNH STX Quad 420/470/500/580/620	36" - 914mm
36"x6"x42 SCR	CNH STX Quad 420/470/500/580/620	36" - 914mm
24"x6"x44	Axial Flow et CR	24" - 635mm
28,5"x6"x44	Axial Flow et CR	28,5" - 724mm
24"x6"x44	Magnun Rowcrop & New Holland T8	24" - 610mm
30"x6"x44	Magnun Rowcrop & New Holland T8	30" - 762mm

JOHN DEERE

TRACK SIZE	MODEL	WIDTH
18"x6.75"x48	John Deere 8000T/8*10T/8*20T/8*30T	18" - 457mm
25"x6"x54	John Deere 8000T/8*10T/8*20T/8*30T	25" - 635mm
30"x6"x54	John Deere 8000T/8*10T/8*20T/8*30T	30" - 762mm
30"x6"x63	John Deere 9000T / 9020T / 9320T	30" - 762mm
36"x6"x63	John Deere 9000T / 9020T / 9320T	36" - 914mm
30"x6"x60	John Deere 8RT	30" - 762mm
30"x6"x65	John Deere 9RT -9470, 9520, 9570 - 9030T	30" - 762mm
36"x6"x65	John Deere 9RT -9470, 9520, 9570 - 9030T	36" - 914mm
30"x6"x45	John Deere 9RX	30" - 762mm
36"x6"x45	John Deere 9RX	36" - 914mm
25"x6"x39	John Deere S680/S690/S770i/S780i/S790i	25" - 635mm

CLAAS TERRATRAC

TRACK SIZE	MODEL	WIDTH
25"x6,75"x39	CLAAS Lexion 600TT/740/750/760/770/780/960 Grimme Maxtron/Ploeger Harvester	25" - 635mm
30"x6"x44	CLAAS Lexion 600TT/740/750/760/770/780/960 Grimme Maxtron - Ploeger Harvester	30" - 762mm
36"x6"x44	CLAAS Lexion 600TT/740/750/760/770/780/960 Grimme Maxtron - Ploeger Harvester	36" - 914mm

FENDT

TRACK SIZE	MODEL	WIDTH
30"x6"x60	Fendt 938MT, 940MT, 943MT Vario	30" - 762mm
36"x6"x60	Fendt 938MT, 940MT, 943MT Vario	36" - 914mm
30"x6"x66	Fendt MT1149/MT1154/MT1159/MT1165	30" - 762mm
36"x6"x66	Fendt MT1149/MT1154/MT1159/MT1165	36" - 914mm



LEACH LEWIS RUBBER TRACKS LIMITED
Units 4-5 Hikers Way, Crendon Industrial Park, Long Crendon HP18 9RW
www.llrt.co.uk